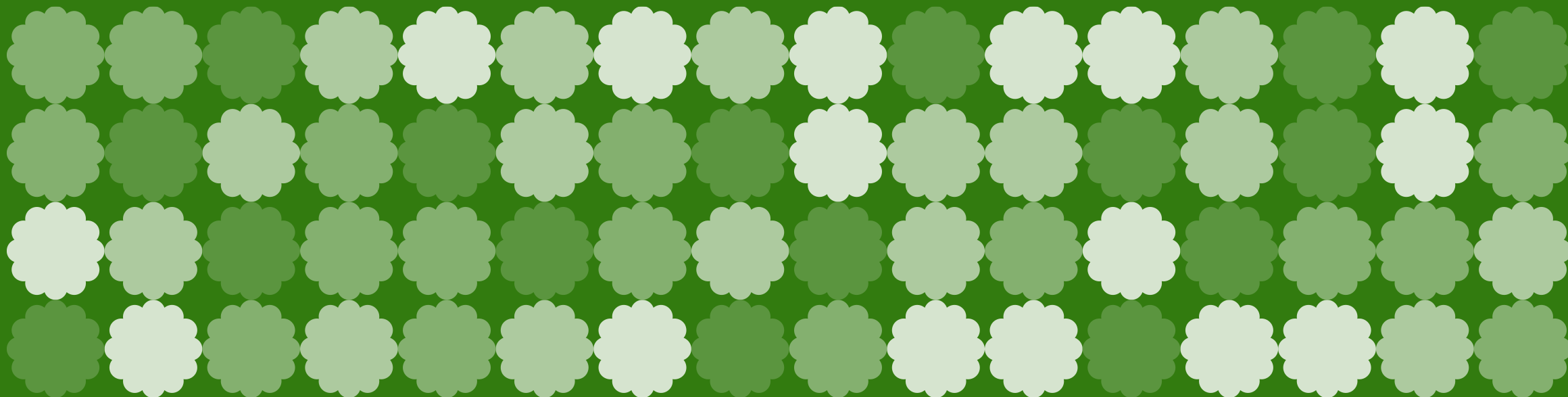
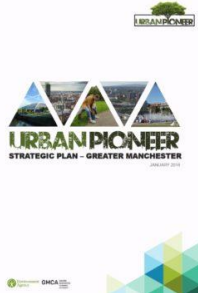
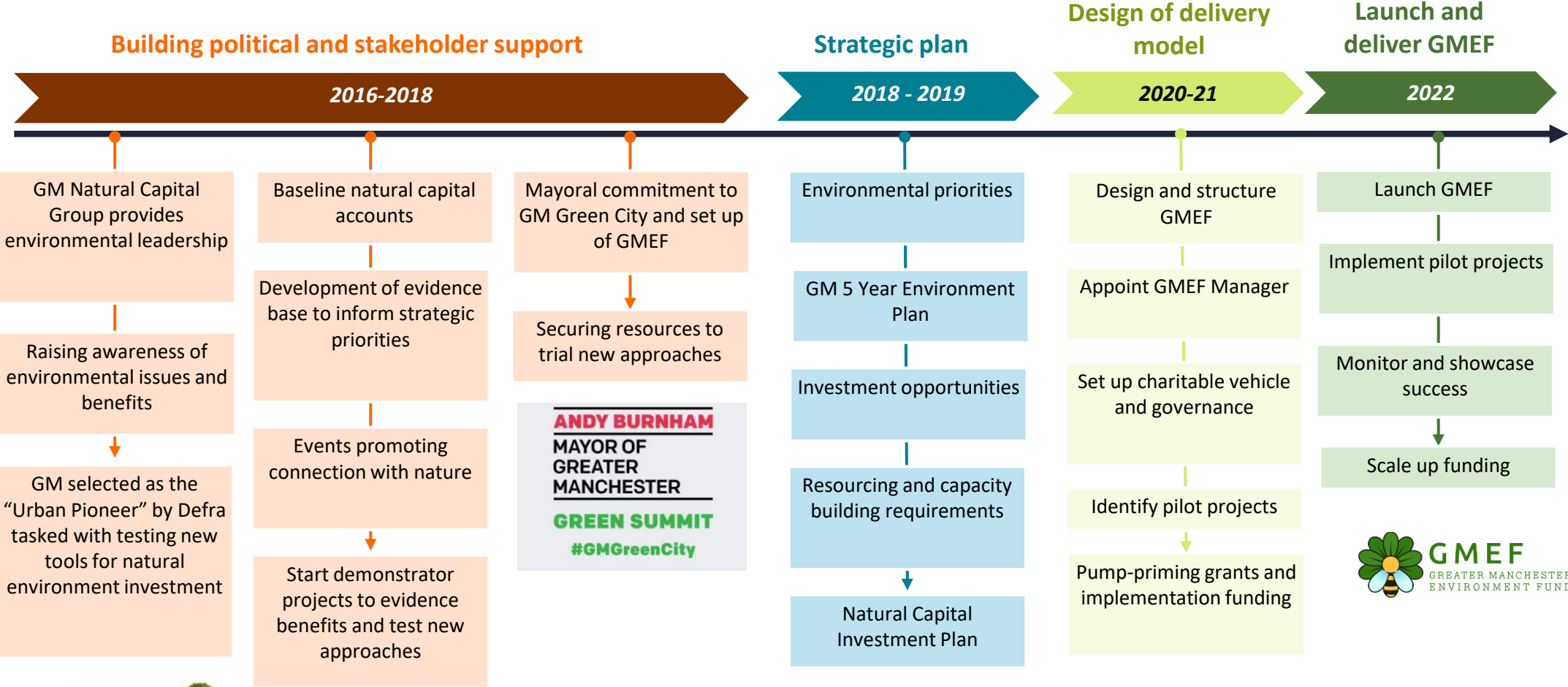


# Greater Manchester – natural environment



# Greater Manchester: Our Natural Capital Journey



*To build a structure of this scale, pump priming grants are required to bring in much needed development capacity to launch GMEF, implement pilot projects and showcase the benefits that GMEF has to offer.*

# Valuing our Natural Environment

## £1bn - total annual benefit



## £9bn – total value of **avoided healthcare costs** (over 60 yrs)



Preventing **370** hospital admissions, avoiding **1,200** life year's lost



Approx. **44,000** buildings receive noise mitigation



**135,000** people meet their physical activity guidelines, giving over **4,600** QALYs

# Natural Capital Investment Plan

The investment plan aims to support the agreed vision of:

***“A Greater Manchester where investments in natural capital enhance the long-term social, environmental, and economic health and wellbeing of its people and businesses.”***

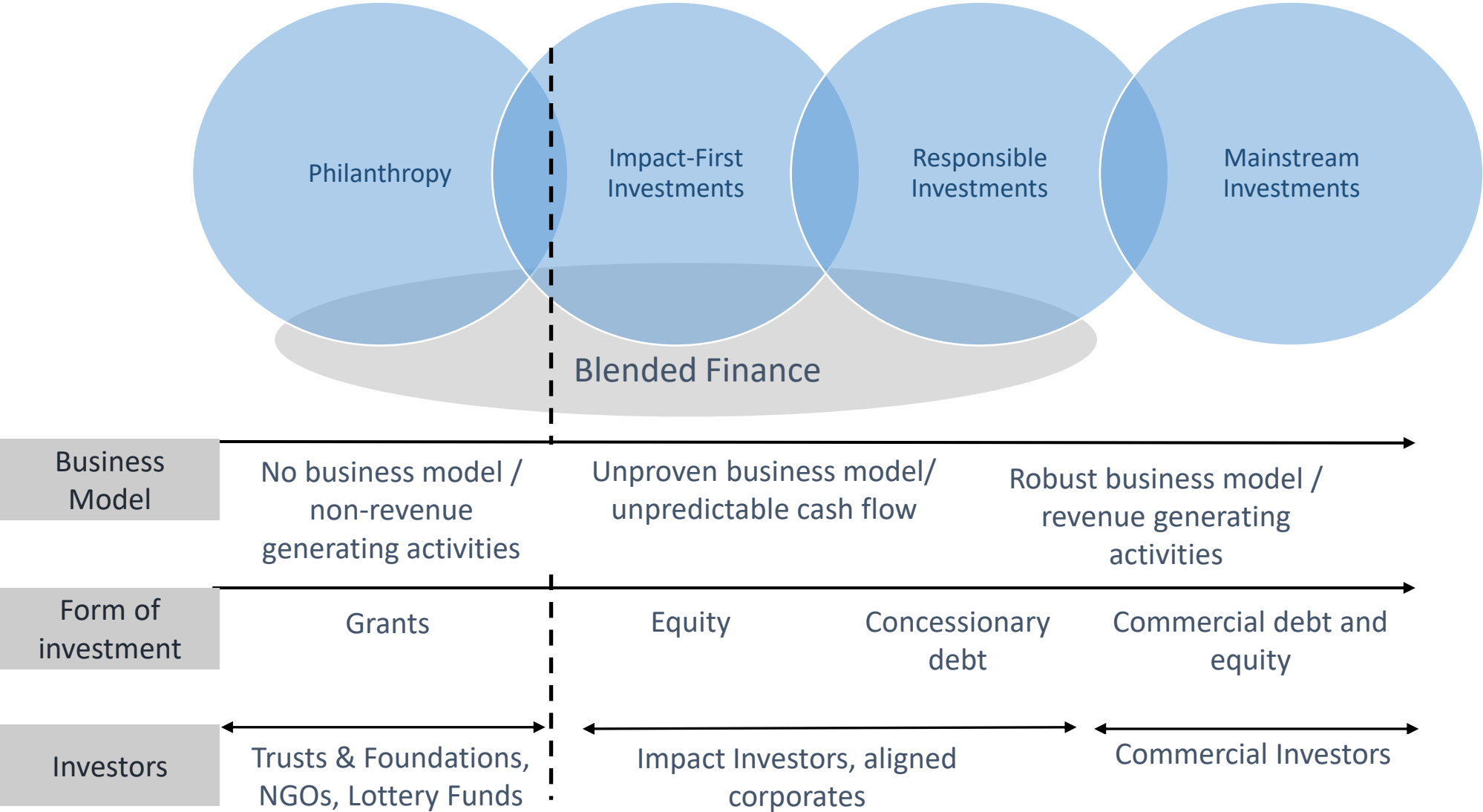
Investment in natural capital defined as:

**“Funding that is intended to provide a return to the investor while also resulting in a positive impact on natural capital.”**

- Returns are defined predominantly, although not exclusively, in financial terms.
- Public and third sectors still have an important role to play, as enablers and innovators.



# Sources of capital



# GMEF Funding Opportunities Horizon

Liaison with a broad range of GM stakeholders and a dedicated GMEF Advisory Group has evidenced the significant opportunity for GMEF to raise public, philanthropic and private funds to deliver a thriving natural environment in GM and become self-sustaining over the long-term.

Short Term (1-3 year)		Medium Term (3-5 years)*		Long Term (5+ years)*	
<b>Pump-priming public and philanthropic grants</b>	To provide much-needed development capacity and to pilot approaches	<b>Landfill funds</b>	Surplus landfill funds	<b>Sustainable Drainage Scheme ("SuDS") fund</b>	Private investment mechanisms for SuDS are in development through the EU-funded IGNITION programme
<b>Corporate funding programmes</b>	Deliver corporate programmes – <b>£200k committed from Suez Community Fund</b>	<b>Enforcement undertakings</b>	Fines for pollution issued by the EA	<b>Environmental Impact Bonds</b>	Results-based payment models are being explored to finance NBS
<b>Habitat Bank Facility</b>	Further detail provided	<b>Corporate sponsorship and individual giving</b>	Long-term corporate partnerships and individual giving based on GMEF showcasing success	<b>Built environment carbon fund</b>	GM is considering a mandatory carbon offsetting approach to delivering net zero carbon development
<b>Carbon Mitigation Facility</b>		<b>Plastic bag / waste levies; business levies</b>	Levies through retail partnerships and / or Business Improvement District initiatives	<b>Low-carbon / circular economy</b>	Incorporate investment funds to achieve wider low carbon ambitions

**Within 5 years, GMEF aims to accumulate sufficient funding, levies and private investment to become a self-sustaining funding source to support the delivery of GM's environmental ambitions.**

*\*Funding opportunities are indicative based on market analysis and stakeholder engagement. Other funding opportunities may also be available.*

# Grant funding projects – Green Recovery Challenge Fund

GMEF has formed a partnership with GM-based NGOs to support the delivery of the pilot GM Local Nature Recovery Strategy through a portfolio of collaborative projects that will demonstrate how activity can help both nature and people recover from Covid-19. Funding requested = £1,823,016

## Shovel-ready project portfolio

GMEF and partners aim to deliver a portfolio of 10 ‘quick win’, collaborative projects in every Borough of GM, to help realise GM’s Local Nature Recovery Strategy through:

- **Delivering 537ha of habitat restoration, across 42 sites, benefitting 2,758ha of connected landscapes:**
  - 48ha wetland and lowland peat in GM Wetlands NIA, a constantly threatened pinch point between GM and Liverpool.
  - 117ha upland peat at Dovestone in Oldham
  - 58ha floating island habitat along GM canals
  - 59ha riparian habitats along GM river corridors
  - 255ha existing woodlands in Bury, Oldham and Trafford
- **Delivering nature-based solutions to address the climate emergency**
  - 446ha natural flood management projects across 5 boroughs
  - 155ha peatland restoration to transform areas into carbon stores



## Connecting people with nature

2,979  
Local  
volunteers

2,751  
families

## Job creation and volunteering opportunities

21  
New  
posts

9  
supplier  
jobs

16  
existing  
jobs  
saved



# Grant Funding - Green Spaces Fund



## Purpose

We will create a new 'Green Spaces Fund' to give small grants to communities to clean up and improve pocket parks and local green spaces or create new ones where they are needed.

[We will] increase the amount and quality of accessible nature-rich green space, particularly for our poorest residents."

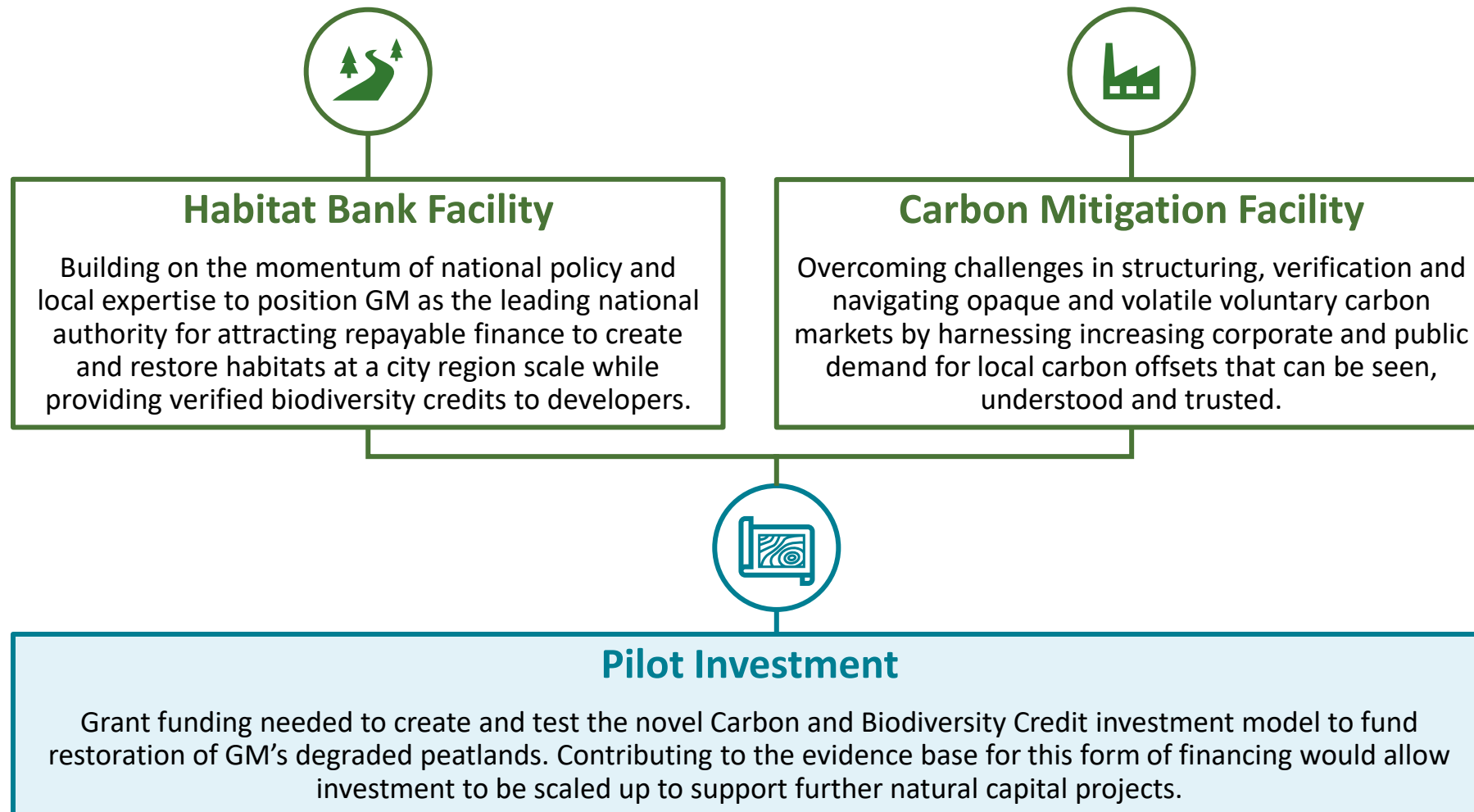


## Round 1 Proposals:

- Over 70 projects proposed from across Greater Manchester – 21 awarded funding.
- A range of small (<£10k) and large (<£40k) proposals submitted.
- A range of organisations and project types.

# Investment Opportunity Deep Dives

Two key investment models have been identified as the initial focus of GMEF, with the need to deliver a proof of concept pilot investment to support model scale up.



# Further Information

- <https://www.greatermanchester-ca.gov.uk/what-we-do/environment/natural-environment/natural-capital/>
- <https://gmenvfund.org/>

