



# Churches and Social Prescribing

**Chaired by Jim Burt**

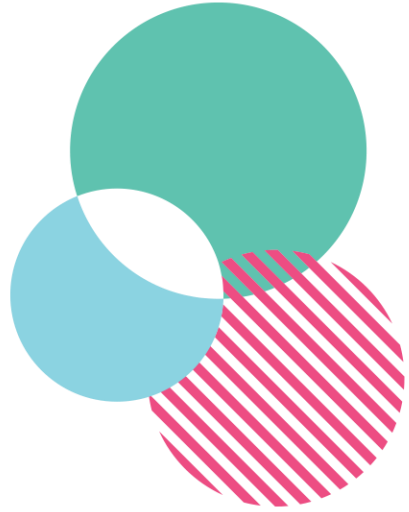
Executive Director, Programme and interim joint CEO  
National Academy for Social Prescribing

Monday 5th December 2022 [@NASPTweets](https://twitter.com/NASPTweets)

# Housekeeping

- Please note we are **recording** this webinar
- There will be a **Q&A session** at the end
- Please submit questions via the chat
- Please use the chat for introducing yourself and networking
- Please stay on **mute** and **camera off**
- **Closed Captions** are available – turn these on at the bottom of your screen
- **BSL interpretation** is available – the interpreters will be spot lit

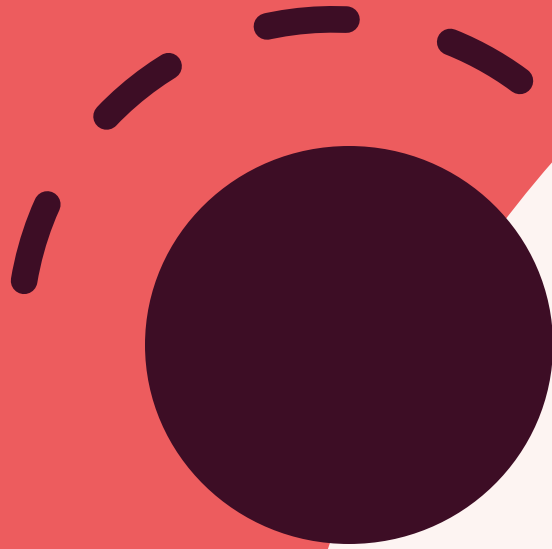




National  
Academy  
for Social  
Prescribing

# Why involve churches in social prescribing

Claire Fenner Crawley  
Manager  
Churchworks Commission



# The ChurchWorks Commission

Social Prescribing and the Church

[www.churchworks.org.uk](http://www.churchworks.org.uk)

## What is the ChurchWorks Commission?

- Commission of 24 senior church leaders from 15 major UK denominations
- Uniting to focus on priorities for UK Covid recovery in communities:
  - Community wellbeing
  - Children and young people
  - Cost of living crisis – 4000+ warm spaces open this winter ([warmwelcome.uk](https://www.warmwelcome.uk))

# Social Prescribing: in the church's DNA

- Churches have been building and linking communities for centuries
- ChurchWorks Commissioners are committed to involving churches more in local social prescribing networks
- Strengths of churches:
  - Strong community links
  - Skill in welcoming and befriending
  - Reduced stigma compared to statutory services
  - Deeper access to certain communities (vaccination campaign)
  - Community-focused physical space

# Social prescribing to churches: only for Christians?

Many churches run high quality programmes for the community

- Open to people of all faiths and none
- Nationally supervised
- Agreements covering safeguarding, proselytising

Kintsugi Hope – wellbeing peer support groups

The Bereavement Journey – bereavement peer support groups

Linking Lives – befriending to tackle isolation

Check out our other ChurchWorks members: [www.churchworks.org.uk/who-we-are](http://www.churchworks.org.uk/who-we-are)

# Join us to continue the conversation!

## ChurchWorks for Wellbeing day conference

*Tuesday 7<sup>th</sup> March 2023, Westminster Chapel*

Join our national discussion about the church's response to the mental health crisis. Sessions to include church-based wellbeing programmes and social prescribing for wellbeing.

Sign up via [Eventbrite](#).



# The Warm Welcome Campaign



3,700+ spaces registered!

[warmwelcome.uk](http://warmwelcome.uk)

## Warm Welcome local church

- PARKING
- ACCESSIBLE TOILETS
- FOOD AVAILABLE
- HOT DRINKS
- OTHER REFRESHMENTS
- CO-WORKING DESKS
- CHARGING FACILITIES
- CHILD FRIENDLY

St Michaels Church Street  
Reepham, Norfolk NR10 4JL

[www.reepham-and-wensum-valley-team-churches.org.uk/](http://www.reepham-and-wensum-valley-team-churches.org.uk/)

## Latest Resources



Getting Started



Branding



Making your Space welcoming



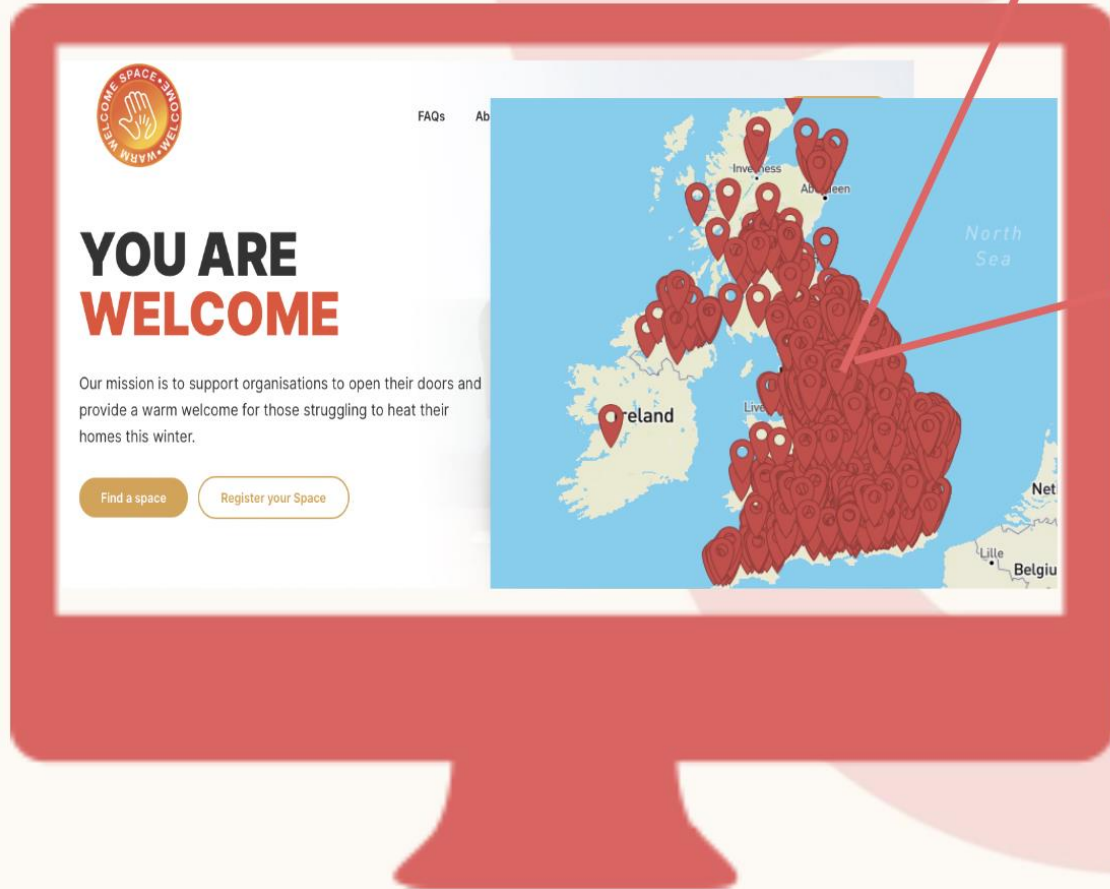
Ensuring your Space is safe



Fundraising Toolkit



Working with Volunteers





National  
Academy  
for Social  
Prescribing

## Case study 1

**What could a social prescribing model look like?**

Rev Dr Tim Peppiatt

Faith Kenny

Sophie-Rose Fanner



National  
Academy  
for Social  
Prescribing

## The wider Hampshire Community Healthcare Chaplaincy model

**Rev Dr Tim Peppiatt**

Community Healthcare Chaplain for Diocese of  
Winchester within Hampshire and IoW ICB



National  
Academy  
for Social  
Prescribing

## The power of church collaboration with social prescribing in Hampshire

**Faith Kenny**  
Social Prescribing Link Worker  
St Mary's Surgery Southampton



National  
Academy  
for Social  
Prescribing

## Social prescribing at the Marketplace in St Mary's Church, Southampton

**Sophie-Rose Fanner**  
Saints in the City Lead  
St Mary's Church Southampton

# The Marketplace



Saint Mary's Church &  
Southampton Central Primary Care Network



# Is there a place for Chaplaincy working with Social Prescribers?

Recent emphases in Health Provision...

Holistic care

Spiritual health

Disease prevention

Building resilience

The importance of communities



# Spiritual Care

Hope

Meaning

Purpose

Connectedness to  
self, community  
and maybe  
Transcendence





# So what is The Marketplace...

Social supermarket for residents of SO14 experiencing food insecurity.

Membership is £5 per week and members shop a variety of fresh food.



[Video next](#)



Southampton Central  
Primary Care Network

# How the partnership began and evolved...



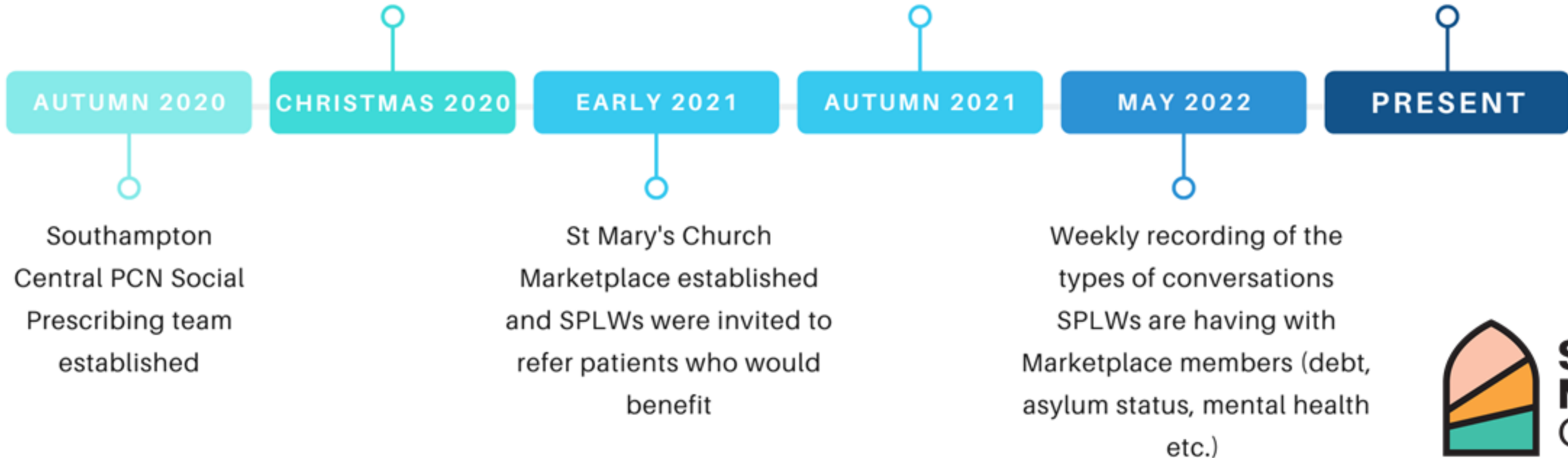
Southampton Central  
Primary Care Network



SPLWs in contact with St Mary's Church and Southampton City Mission about food resources for patients over the Christmas period. St Mary's Church were providing Christmas food parcels

Further discussions between SPLWs and Marketplace team. Partnership established for SPLWs to start attending the Marketplace to provide social support to members

Weekly SPLW presence at St Mary's Marketplace, supporting members with social signposting, as well as benefiting from the Marketplace environment as a community space to meet with patients



Saint  
Mary's  
Church

# How the partnership has proved mutually beneficial



Southampton Central  
Primary Care Network



- **Referral route** into project
- Marketplace project is well **aligned to Social Prescribing principles**
- **Brilliant welcome** from Marketplace volunteers
- SPLWs provide social **signposting expertise**
- **Removing barriers** to access



# The Church Perspective



The **Social Prescribers**  
at Southampton  
Central PCN are  
**AMAZING !!**



Southampton Central  
Primary Care Network



### Julia\*

Hadn't let her home in over 2 years before coming to the Marketplace. 18 months later, she has the confidence to attend solo and has a volunteering job that she loves!



Southampton Central  
Primary Care Network

### Paul\*

The Marketplace enables him to access a variety of food whilst unable to work. Social prescribers have supported him with access to correct mental health support.



# The Church Perspective



- **Expert knowledge** that volunteers do not possess
- Greater **integration into local** community
- Less formal space creates a more **relaxed atmosphere** for patients
- **Tackles the cause** to a members *crisis*





National  
Academy  
for Social  
Prescribing

## Case study 2

A model for integrating churches and social prescribers

Rev Ian Rutherford

Movement for Recovery, LiveWell campaign in Greater Manchester

# CHURCHES & SOCIAL PRESCRIBING

**MOVEMENT** for **RECOVERY**



**Revd Ian Rutherford**

*Methodist City Centre Minister  
Core Team, Movement for Recovery*



# THE TEN BOROUGHS



Part of Greater Manchester  
Integrated Care Partnership

**NHS**  
Greater Manchester  
Integrated Care



# THE DESIRED OUTCOMES *People*

- ✓ Reduce inequalities
- ✓ Increase levels of health and wellbeing
- ✓ Life satisfaction
- ✓ Independence, resilience with less need to rely on public services
- ✓ Social connection



# THE DESIRED OUTCOMES *Communities*

- ✓ Strong and sustainable organisations
- ✓ Positive relationships and partnerships between organisations, and with the public sector
- ✓ Able to respond to what local people want and need



# THE DESIRED OUTCOMES *Public Services*

- ✓ Better able to respond to what people want and need and to manage demand
- ✓ A better understanding of how to improve community based health & wellbeing



# ROCHDALE & OLDHAM



# ROCHDALE & OLDHAM



# TRAFFORD



*the Chapel in the Fields*



# TRAFFORD



*the Chapel in the Fields*





# MANCHESTER



# MANCHESTER



**Physical Instructor:**  
Orlando Grant



**Facilitator:**  
Sylvia Ofovbe,  
Registered Dietician



**Guest Speaker:**  
Dr. Hibbah Osei- Kwasi  
Registered Dietitian

We invite you to

# HEALTHY HEARTS

**TOPIC: WHAT IS YOUR RELATIONSHIP WITH FOOD?**

**Tuesday 22nd November 2022  
6pm - 7:30pm**

Tune in this Tuesday for a session on relationship with food followed by an active circuit session at the end.



To register, email [events@cahn.org.uk](mailto:events@cahn.org.uk) or call 07710 022382

# GREATER MANCHESTER PILOT



Part of Greater Manchester  
Integrated Care Partnership

**NHS**  
Greater Manchester  
Integrated Care



**MOVEMENT** for **RECOVERY**

A large yellow semi-circle is positioned to the left of the text "MOVEMENT for RECOVERY". The word "MOVEMENT" is in a bold, black, sans-serif font, "for" is in a smaller, lowercase font, and "RECOVERY" is in a bold, black, sans-serif font.

# Rev. Ian Rutherford

*City Centre Minister*

*Central Hall Manchester*

*Email: [ianr7@hotmail.co.uk](mailto:ianr7@hotmail.co.uk)*

*Mobile: 07548 846173*





National  
Academy  
for Social  
Prescribing

### Case study 3

Lancashire's emerging faith and social prescribing partnership

Peter Lumsden

Methodist district interfaith officer

Peter Lumsden

Methodist district  
interfaith officer and  
part of the  
Lancashire Forum of  
Faiths

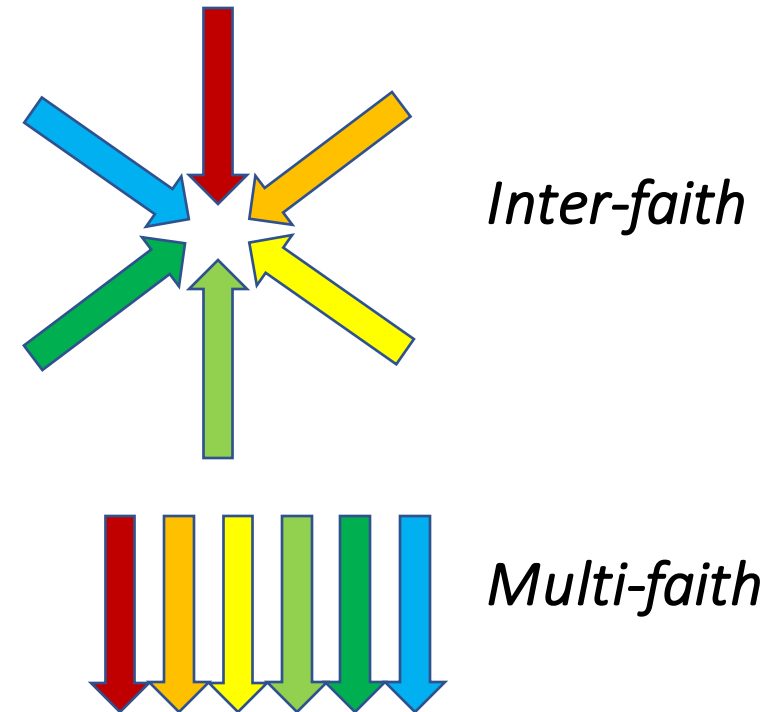
Lancashire's emerging  
faith and social  
prescribing  
partnership

# Outline

- a) Delineating faith 'sector'
- b) Partnership working with VCFSE
- c) Examples of church / social prescribing
- d) Benefits - and challenges.....

# What do we mean by "faith-based organisations" (FBOs)?

- Worshipping communities
- Faith-based or faith-inspired charities
- Inter-faith groups/networks
- Chaplaincy and spiritual care





**Blog Building a strong society: a framework of faith** 29 Jan 2021

*Peter Lumsden, a member of the [Lancashire Forum of Faiths](#), reflects on the role that faith groups have played in responding to the COVID-19 pandemic in Lancashire.*

- **Social Action**
- **Community Cohesion**
- **Spiritual wellbeing**



# Outline

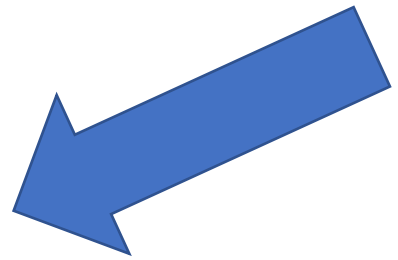
- a) Delineating faith 'sector'
- b) Partnership working with VCFSE**
- c) Examples of church / social prescribing
- d) Benefits - and challenges.....

Health

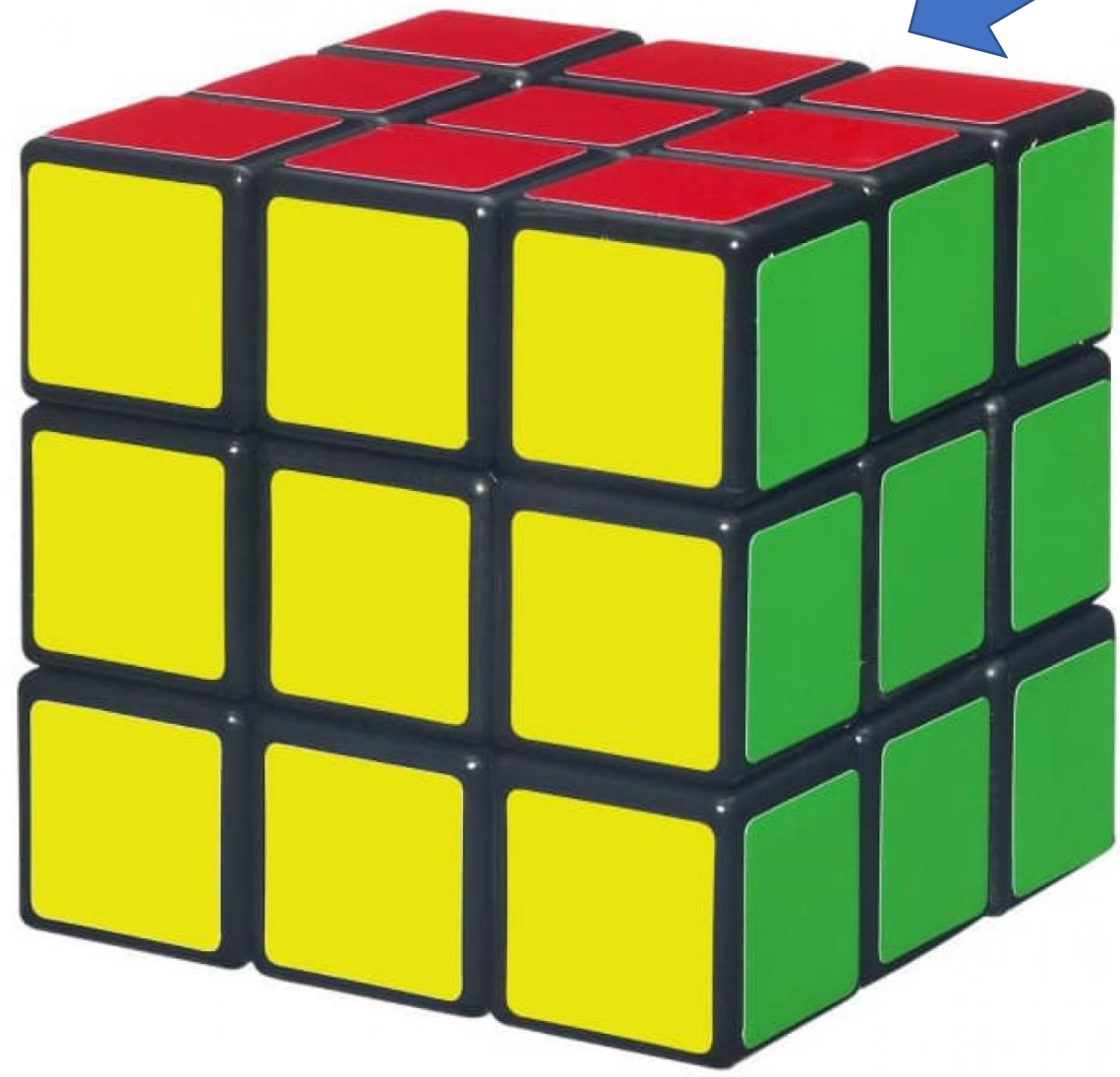
Divide by activities



Local Authority



Divide by geography



VCFSE

# Outline

- a) Delineating faith 'sector'
- b) Partnership working with VCFSE
- c) Examples of church / social prescribing**
- d) Benefits - and challenges.....



**At Home  
Community Cafe,  
West Preston  
Methodist Church**

@homecommunitycafe







West Preston  
Methodist Church  
In Ashton

Monday &  
Wednesday  
10.30am - 2pm

# @HOME

community café

Wellington Road, Preston, PR2 1BU  
Run by volunteers

FREE WIFI,  
fresh made  
cakes, soup,  
jacket potato  
available

## A place of safety, acceptance and belonging.

### Monday's:

- Mindful Monday Craft  
1st of the month from **11am**
- Women's Peer Support Group  
for mental health, **11am - 12.30pm**
- Walkx Wellbeing health walk  
3rd of the month, **1pm - 2pm**
- Chatty Chairs an formal friendship  
group for women, **1pm - 2pm**
- Wellbeing Journey  
6 week course for holistic wellbeing  
please contact for details

### Wednesday's:

- Toddler Group **10am - 12noon**
- Christian Meditation in the quiet room,  
**11am - 11.30am**
- Happy Daze Men's Peer Support group  
for mental Health, **12noon - 2pm**
- Craft and Chat bring your own craft,  
**1pm - 3pm**

### 3rd Thursday of the month:

@Home Worship Ashton location,  
Wellington Road, PR2 1BU, **7pm**

All activities open to drop in. For information contact  
Wendy Foot on 07756631368

News > People

# "It's part of our remit": Chorley's St. Laurence's Church on feeding those in need during the Covid-19 pandemic

Each Monday evening, St. Laurence's Church in Chorley manifests the purest form of community expression possible





Tuesday - Friday

11am - 2pm

Home baked cakes,  
coffee, tea, soup & a roll

(fruit also available)





**PARTNERS**

- Chorley Council
- Christians Against Poverty (CAP)
- ASDA
- Tesco
- Lancashire County Council
- Chorley Help the Homeless
- Living Waters Foodbank
- Talking Tables
- Chorley (non-church) Community
- Local market traders
- NHS – social prescribers
- Schools

# COTS – church on the street + Burnley PCN



# Outline

- a) Delineating faith 'sector'
- b) Partnership working with VCFSE
- c) Examples of church / social prescribing
- d) **Benefits - and challenges.....**



National  
Academy  
for Social  
Prescribing

# Q&A





National  
Academy  
for Social  
Prescribing

**Thank you**

Our next webinar will be:

NASP: Financial Wellbeing and Social Prescribing, January 10th, 09.30-11am

<https://www.eventbrite.co.uk/e/479138124027>

More details and to catch up with previous NASP sessions see:  
[socialprescribingacademy.org.uk/thriving-communities-webinars](https://socialprescribingacademy.org.uk/thriving-communities-webinars)



National  
Academy  
for Social  
Prescribing

## Get in touch

[socialprescribingacademy.org.uk](https://socialprescribingacademy.org.uk)

 @NASPTweets

 @NASP\_insta